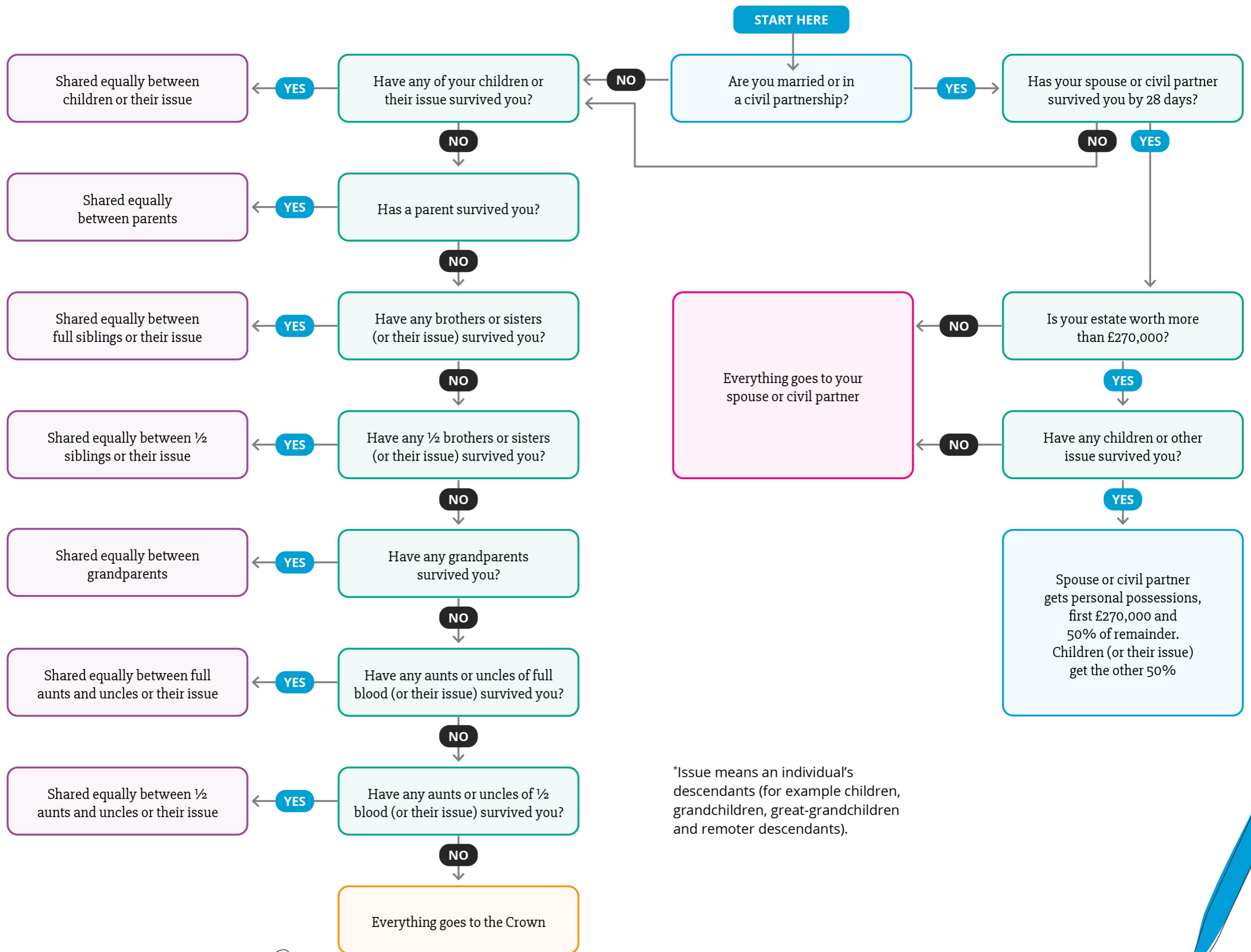


What happens if you die without a Will on or after 6th February 2020?

A guide to how the Intestacy Rules in England and Wales apply



*Issue means an individual's descendants (for example children, grandchildren, great-grandchildren and remoter descendants).

01904 866 139 | hello@rochelegal.co.uk

If you have any questions about how the Intestacy Rules might apply to your estate, or the estate of a loved one who has recently died, please do not hesitate to contact our reassuring experts – we will be happy to help you.

Offices in York and London by appointment only.

Roche Legal